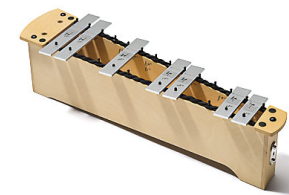


item name **Soprano Metallophone**
 item number 27814101
 item description SMP 2.1 INT
 sound bar material metal, specially alloyed
 sound bar color silver
 sound bar width 35 mm
 sound bars thickness 5 mm
 tuning fundamental tuning



sound bar imprints In Germany the accentuations for the diatonic C major scale are: c d e f g a h c. In England, the United States and further countries the names are: c d e f g a b c. Solfège music teaching in English-speaking countries uses the syllables: do, re, mi, fa, sol, la, ti. The chart on the last page shows note names and sound bar imprints.

sound bar references The actual measure of a sound bar can differ slightly from this specifications. The reasons for this are the tuning procedure and the material properties.

item number	29100828	tone	c-sharp2	sound bar length	215 mm
item number	29100830	tone	d-sharp2	sound bar length	203 mm
item number	29100835	tone	g-sharp2	sound bar length	175 mm
item number	29100842	tone	c-sharp3	sound bar length	151 mm
item number	29100844	tone	d-sharp3	sound bar length	142 mm
item number	29100849	tone	g-sharp3	sound bar length	122 mm
item number	29100852	tone	b-flat3	sound bar length	115 mm

Arrangement of sound bars

The diagram illustrates the arrangement of sound bars for various musical notes. It is organized into four main groups of notes, each with a corresponding sound bar imprint and accentuation pattern.

Legend:

- = extent of delivery
- = accents
- = extent of delivery
- = extent of delivery

Notes and Sound Bar Imprints:

- Group 1 (c2, d2, e2):** Notes c², d², e². Sound bar imprints: d^b, e^b. Accents: d-flat2, e-flat2, c-sharp2, d-sharp2.
- Group 2 (f2, g2, a2, b2):** Notes f², g², a², b². Sound bar imprints: g^b, a^b, h = b^b. Accents: g-flat2, a-flat2, b-flat2, f-sharp2, g-sharp2.
- Group 3 (c3, d3, e3):** Notes c³, d³, e³. Sound bar imprints: d^b, e^b. Accents: d-flat3, e-flat3, c-sharp3, d-sharp3.
- Group 4 (f3, g3, a3, b3):** Notes f³, g³, a³, b³. Sound bar imprints: g^b, a^b, h = b^b. Accents: g-flat3, a-flat3, b-flat3, f-sharp3, g-sharp3.

Notes and Sound Bar Imprints (Continued):

- Group 5 (c4):** Note c⁴. Sound bar imprint: d^b. Accent: d-flat4, c-sharp4.

Notes and Sound Bar Imprints (Bottom Row):

- c², d², e², f², g², a², h = b², c³, d³, e³, f³, g³, a³, h = b³, c⁴